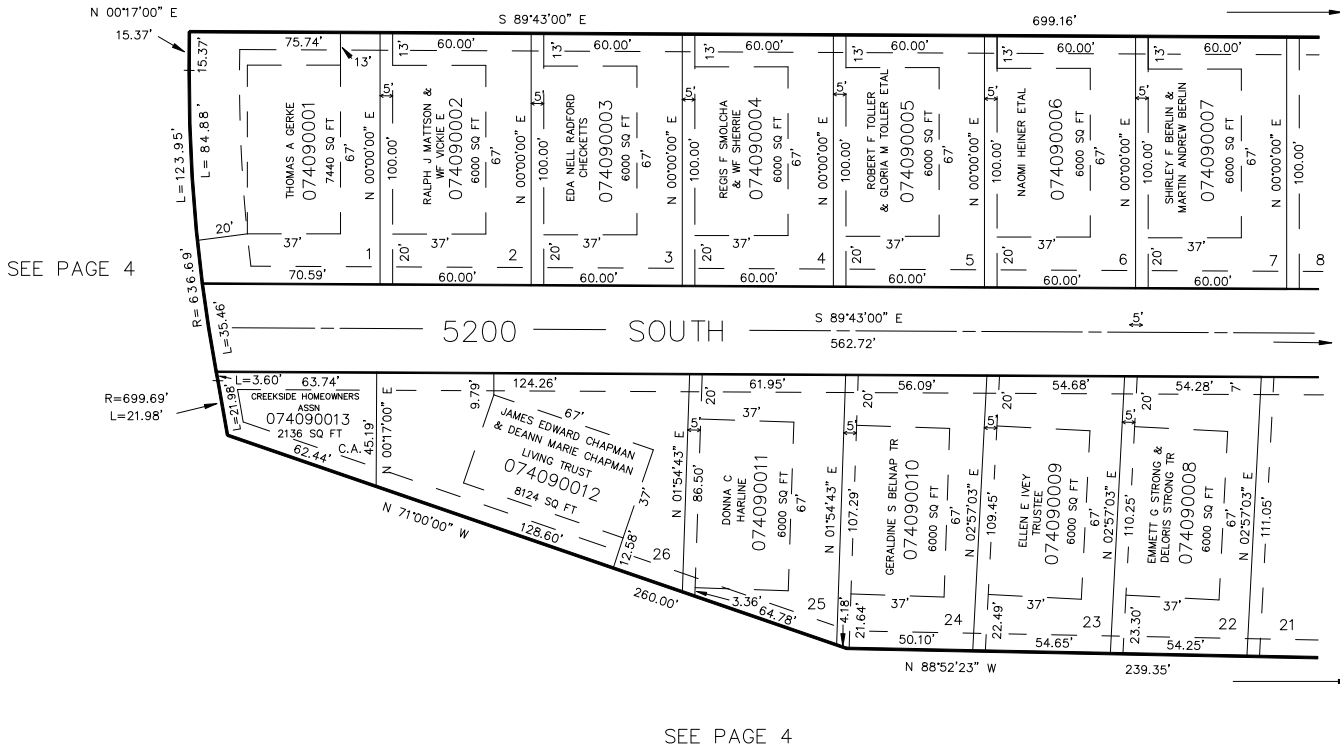


PART OF THE W 1/2, SEC. 15, T.5N., R.1W., S.L.B. & M.
AMENDED PLAT of
CREEKSIDE ESTATES A P.R.U.D. SUBDIVISION
 LOTS 1-7 & 22-26

TAXING UNIT: 27

IN SOUTH OGDEN CITY
 SCALE 1" = 40'

SEE PAGE 2



SEE PAGE 410

SEE PAGE 4

FOR COMPLETE ENG DATA SEE ORIGINAL DEDICATION PLAT IN BOOK 34, PAGE 79 OF RECORDS & AMENDED DEDICATION PLAT IN BOOK 39, PAGE 6 & 7 OF RECORDS.

7' UTILITY & DRAINAGE EASEMENTS EACH SIDE OF PROPERTY LINES AS INDICATED BY DASHED LINES EXCEPT AS OTHERWISE SHOWN.